



2023 Models



**ONTOUR 2.0 | ONTOUR 2.2**  
Ford Transit Chassis

***Pleasure-Way***





# MESSAGE FROM PW

Pleasure-Way Industries Ltd. is pleased to be celebrating its 37<sup>th</sup> year as a leader in the RV manufacturing industry. A family-owned and-operated business since its inception in 1986, Pleasure-Way is committed to building the highest-quality luxury motorhomes.

Pleasure-Way's unwavering commitment to quality, safety, and customer satisfaction is evident in the fact that we do not mass produce our motorhomes on assembly lines; rather each motorhome is hand-crafted and custom-fitted to exacting standards and rigorous quality inspections. Due to our meticulous, labour-intensive construction process, we are proud to have one of the lowest warranty claim rates in the entire RV industry. In fact, we are so confident in the quality of our motorhomes that we back each new Pleasure-Way with our Five Year Freedom Coach Warranty - one of the best and longest warranties in the industry.

We would never be where we are today without our team of dedicated and skilled employees, or without the enthusiastic support from our owners. We are deeply grateful for everyone that has been involved with Pleasure-Way over the past 37 years and we look forward to continuing to deliver a first-class RV experience.

## CONTENTS

Models	2	Ford Transit Chassis	12
10-Inch Touchscreen	3	The Pleasure-Way Life	13
Standard Features	4	Specifications	14
Ontour 2.0	7	Warranty	15
Ontour 2.2	9	Personal Assistant	15
Build Your Own	11		



This distinguished recognition reinforces our core company values of hard work, superior quality, and top-notch customer service.



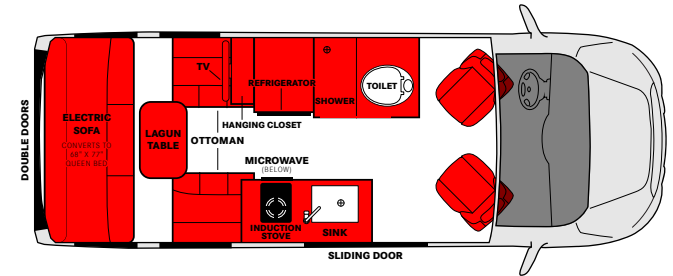
**QUALIFIED VEHICLE MODIFIER**  
Pleasure-Way Industries Ltd. belongs to the QVM program as designated by Ford Motor Company.

# FORD TRANSIT MODELS

## ONTOUR 2.0



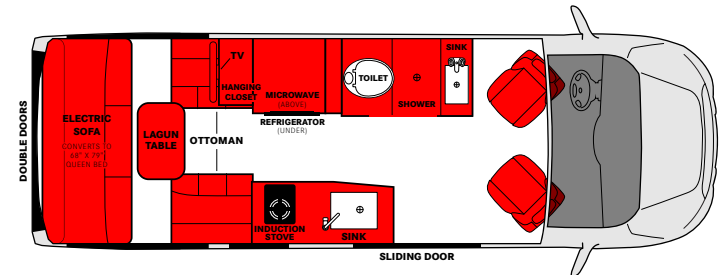
Fuel Type:	Gasoline
Standard Engine:	3.5L EcoBoost® V6
Length: (bumper to bumper)	19' 8" / 598 cm
Overall Height:	10' / 305 cm
Width:	7' ½" / 215 cm
LP Tank Capacity:	12 US Gal / 45 L
Fresh Water Tank Capacity:	25 US Gal / 95 L
Grey Water Tank Capacity:	15 US Gal / 57 L
Black Water Tank Capacity:	11 US Gal / 41 L
Towing Capacity:	2,130 lbs / 966 kg



## ONTOUR 2.2



Fuel Type:	Gasoline
Standard Engine:	3.5L EcoBoost® V6
Length: (bumper to bumper)	21' 10" / 670 cm
Overall Height:	10' / 305 cm
Width:	7' ½" / 215 cm
LP Tank Capacity:	12 US Gal / 45 L
Fresh Water Tank Capacity:	28 US Gal / 107 L
Grey Water Tank Capacity:	15 US Gal / 57 L
Black Water Tank Capacity:	11 US Gal / 41 L
Towing Capacity:	1,600 lbs / 725 kg





# 10-INCH TOUCHSCREEN CONTROL PANEL

The groundbreaking 10-inch touchscreen performs in-depth monitoring of vital coach functions, provides real-time diagnostics of major appliances and features a customizable display for total control over your electrical system. All models are equipped with two 10-inch panels that make managing key functions of the coach effortless.

## CLIMATE CONTROL

The responsive touchscreen includes centralized control of the furnace, air conditioner and power roof vent. Simply set your climate mode and desired temperature and the control panel will automatically maintain from there.

## Remaining Runtime for DC Power

You can now view the estimated time remaining on your coach battery charge with the current DC power draw of your motorhome. This feature pairs well with boondocking, as you now have an easy to understand read-out that will determine and even extend how long you can remain off-the-grid!

## AC POWER

At a glance you can view what AC power source you are currently drawing from to power your coach with clear-cut, uncomplicated visuals. The 2000-Watt inverter control has been integrated into the new touchscreen to simplify the electrical system even further.

## BATTERY MONITORING

To enhance the already powerful 200Ah Eco-Ion lithium coach batteries, we have incorporated dynamic new features for smart, convenient and painless energy management.

## Battery Temperature Gauge

Located on the battery state-of-charge meter, the new gauge removes all guesswork to ensure the batteries are above freezing temperatures for safe charging.

## AUTOMATIC GENERATOR START (AGS)

AGS is an innovative feature that allows you to set, start and stop parameters for generator control when not plugged into shore power.

## State-of-Charge Meter

View your current battery state-of-charge as a percentage in real-time.

## GO POWER!® SOLAR INTEGRATION

Monitoring your solar panel charge volts and amps is now neatly included on the touchscreen. Additionally, inside the settings section of the solar charger module you can view the overall history of your solar panel amperage draw. This will give you an accurate picture of the average amount of amps the solar panels add to the coach batteries.

## Low Coach Battery Voltage

When the batteries are low on voltage, the generator will automatically run to charge the batteries at your pre-defined voltage, and then shut off.

## Automatic Climate Control

If the temperature exceeds your AC thermostat setting, the generator will automatically run the AC until the desired temperature has been reached. This is a great feature if you are traveling with pets.



## Estimated Time Until Charge

While charging your coach batteries, the estimated time remaining until a full charge is achieved will be displayed. This immensely helpful feature allows you to accurately gauge how long the current method of charging will take until you are ready to operate again at full battery capacity.





# STANDARD FEATURES



## REAR DOOR ROLL-UP SCREEN

If you're the type who loves fresh air and a cool breeze, you'll love our integrated screen doors. The heavy-duty nylon canvas screen precisely fits the rear opening and features a super-fine mesh, keeping insects out and only letting fresh air in. The screen door also features a double zipper system that allows for easy access to the under sofa storage space. This flame-resistant screen can be rolled up, tethered, and hidden away when not in use.



## SIDE DOOR ROLL-UP SCREEN

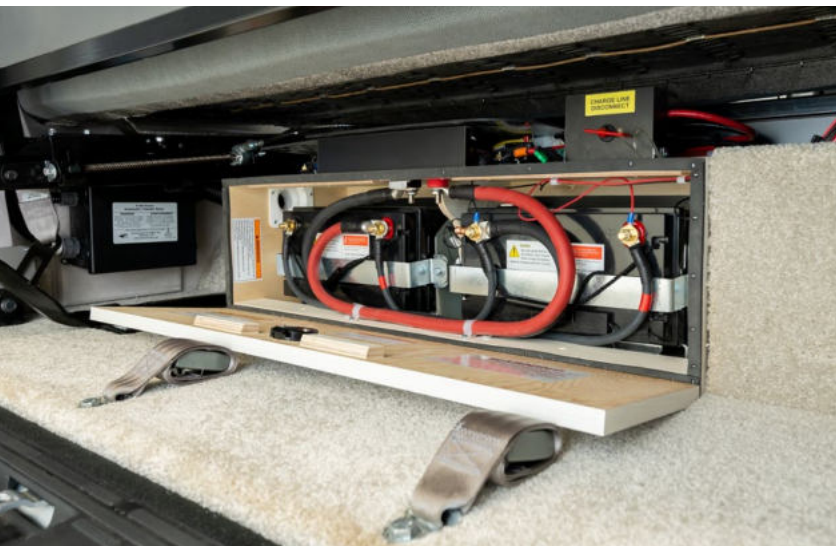
Enjoy the beauty of the outdoors while prepping a meal without the worry of insects ruining the party. A unique magnetic closure system allows for easy access in and out without the need to zip the door open and closed. The super-fine mesh screen and door assembly are constructed from heavy-duty, flame-resistant nylon canvas, resulting in a long-lasting, reliable feature. When the screen is not needed it can be rolled up and secured out of the way.



## GO POWER!® SOLAR PACKAGE

Explore freely and extend your off-the-grid adventures using our roof mounted solar panels. This standard solar package provides power to the coach batteries, allowing for use of the 12V DC system and 120 VAC receptacles through the inverter. This results in greater dry camping abilities as you will be able to travel for longer durations without the need for shore power or running the generator. The integrated charging system has been upgraded to include the super-efficient MPPT charger. The MPPT charger provides 15-30% more efficiency when transferring solar energy from the panels to the battery bank. This can result in stretching the capacity of each 100-Watt solar panel all the way up to 130 Watts!

- Ontour 2.0 solar package: 200-Watt (10 amp)
- Ontour 2.2 solar package: 300-Watt (15 amp)



# STANDARD FEATURES

Here at Pleasure-Way, we are committed to producing first-class motorhomes with exceptional features. To achieve this, we only select high-performing suppliers that deliver the best possible products and superior services. Our commitment to quality is further supported by including these high-end features as standard, rather than offering a complicated list of optional and expensive add-ons. Below, you will find a compelling list of innovative, reliable, and sophisticated standard features, all designed to give you the utmost confidence in your Pleasure-Way motorhome.



## **ECO-ION 200AH LITHIUM BATTERIES**

The high-performing, fast-charging and maintenance-free coach batteries offer superior power storage for hassle-free use of your favourite devices.



## **XANTREX™ 2,000 WATT INVERTER**

Provides power to the TV, microwave, induction stove, and most 120 VAC receptacles when you're not plugged into shore power or running the generator.



## **ONAN® QG 2800I 2.8 KW GENERATOR**

Offering greatly reduced noise and vibration levels, improved fuel efficiency, and better performance, this gas generator is a reliable, and remarkably quiet power source.



## **TRUMA AQUAGO® COMFORT PLUS WATER HEATER**

The 60k BTU stepless burner, recirculating water line, and mixing vessel deliver hot water on demand, at even temperatures, eliminating temperature spikes.



## **TRUMA VARIOHEAT FURNACE**

Three automatic output levels, intelligent fan control, near-silent operation, high air flow, and three stage burner system combine to heat your coach quickly and efficiently.



## **INDUCTION STOVE**

Enjoy hassle-free cooking with this energy-efficient stove. Compared to gas, induction produces less heat, boils water faster, and can be powered off the coach batteries.





### ENTERTAINMENT CENTER

Includes a Bose® Bluetooth® soundbar and 24" LG Smart LED TV. Enjoy broadcast TV in HD with the inclusion of the fully automatic Winegard® Rayzar digital TV antenna.

---



### LAGUN TABLE MOUNT SYSTEM

A cantilevered support arm offers adjustable height, eliminates the typical center post, and swivels 360° at both the table top and support arm.

---



### MEMORY FOAM SOFA CUSHIONS

Assembled with a medium density foam base, 3" of memory foam on top, and finished with a layer of Dacron, resulting in a cooler bed with a smooth, seamless finish.

---



### MCD ROLLER SHADES

Designed for solar protection and made of 100% light blocking material, MCD roller shades cover the windows for complete blackout privacy within the coach.



### 3M™ THINSULATE™ INSULATION

Insulation with both thermal and acoustic qualities for a quieter interior environment along with a superior weather seal for all weather conditions.

---



### CORIAN® SOLID SURFACES

This impact resistant material is non-porous, stain-resistant, and easy-to-clean. Rest assured, Corian® keeps its good looks and easily survives daily wear and tear.

---



### ULTRALEATHER® FABRIC

Innovative strengthening technology makes this luxurious fabric exceptionally durable and stain-resistant. It's also pet friendly, scratch-resistant, and easy-to-clean.

---



### FRONT CAB PRIVACY SHADES

Fully form fitting to your windshield and cab doors, these shades provide privacy and protect your dash from UV damage while helping to keep the coach interior cooler.





## ONTOUR 2.0

FORD TRANSIT 250

A testament to the fact that good things come in small packages, the Ontour 2.0 features all the comforts of home with no compromises. Key standard features include an induction stove, 12V compressor refrigerator, dual 100Ah lithium coach batteries and a 200-Watt solar package, all included to extend dry camping times while exploring the road less traveled.

The 19' 8" Ontour 2.0 is compact, but its 78" of headroom, spacious 77" long rear bed, private wet bath, and fully-equipped galley transforms it into an inviting space. The nimble and responsive handling of the Ford Transit 250 chassis offers a more stable and confident ride, no matter the road. From adventure holiday to spontaneous day trip, the Ontour 2.0 is designed to shine.





**QUEEN BED**

Making the enormous 68" x 77" memory foam queen bed is effortless using the power sofa and ottoman cushions.



**LAMINATE INTERIOR**

Laminate is scratch-resistant, highly durable, and easy to maintain, resulting in a long-lasting solid plywood interior.



**200W SOLAR PACKAGE**

This standard solar package will help keep your coach batteries fully charged for added peace of mind while camping.



**LAGUN TABLE**

Enjoy complete freedom in your dining space with this unique table system that is height adjustable, and swivels 360° at both the tabletop and support arm.





## ONTOUR 2.2

FORD TRANSIT 350

Built on the Ford Transit 350 chassis, the Ontour 2.2 benefits from the fuel efficient 3.5L EcoBoost® V6 engine and 10-speed SelectShift® transmission—a powerful combination suited for any road trip. At just under 22 feet in length, the Ontour 2.2 showcases the largest bathroom, most headroom and longest bed in our Class B lineup.

The interior surrounds you in sophistication thanks to the LED lighting, radius laminate cabinetry, Ultraleather® seating and memory foam sofa cushions. A 5.5 cubic foot 12V refrigerator, dual 100Ah lithium coach batteries and 300-Watts of solar are a few of the standard features designed for convenient living. Plan your escape and hit the road in the well-equipped Ontour 2.2.





### **GALLEY STORAGE**

The well-appointed galley offers an array of storage options including a large cabinet with flush mount doors, and a bank of three, soft-close drawers.



### **ULTRALEATHER® FABRICS**

Designed for dynamic living, this soft, durable, and stain resistant fabric maintains its beauty in the busiest of environments.



### **RADIUS CABINETRY**

Now standard in the Ontour 2.2, laminate radius cabinet doors offer a contemporary look, while providing a long-lasting, highly durable interior.



### **PRIVATE WET BATH**

Newly redesigned for more interior space, this fully equipped wet bath provides all the comforts of home and is finished with waterproof laminate.





The exterior color available for the Ontour is Ingot Silver.

# BUILD YOUR OWN

## RADIUS LAMINATE CABINERY



Champagne



White Smoke

## CORIAN® COUNTERTOPS



White Onyx



Platinum Gray

## ULTRALEATHER® FABRIC



Cashmere



Flint





## FORD TRANSIT CHASSIS

The Ford Transit chassis is the perfect balance between performance and efficiency. From the 10-speed SelectShift® transmission and 3.5L EcoBoost® engine to smart technology that boosts driver confidence, the Transit was built with your safety, comfort and enjoyment in mind.

### SYNC®4 SYSTEM WITH 12-INCH TOUCHSCREEN

Enjoy integrated audio streaming, enhanced voice recognition, climate control and a responsive touchscreen. SYNC®4 is flexible, updatable and configurable to your individual preferences. It features:

- Bluetooth® audio streaming
- Navigation
- Hands-free calling
- Android Auto™ + Apple CarPlay™
- FM/AM/SiriusXM®
- AppLink® - smart integration of your favorite mobile apps
- USB ports

### MULTIFUNCTION STEERING WHEEL

The tilt and telescopic steering wheel allows convenient access to many vehicle functions, including the SYNC®4 system, cruise control, incoming phone calls and simple music controls. Keep your hands on the wheel and your eyes on the road like never before.

### MORE FEATURES

- Remote keyless entry
- Rear view camera system
- Swivel seats
- Adaptive cruise control

### SAFETY FEATURES

Whether you're driving or sitting in the passenger seat, feel confident with the latest safety and innovation from Ford.

- Driver and passenger airbags
- Safety Canopy® System side-curtain airbags
- Blind Spot Assist 1.0
- Lane-Keeping System
- Hill Start Assist
- Side-Wind Stabilization
- AdvanceTrac® with Roll Stability Control (RSC®)
- Forward Collision Warning
- Pre-Collision Assist with Automatic Emergency Braking

- Post-Collision Braking
- SOS Post-Crash Alert System™
- Securilock® Passive Anti-Theft System (PATS)
- Auto high-beam headlamps
- Auto rain-Sensing wipers
- Tire Pressure Monitoring

### FORDPASS™ CONNECT APP

Access features on your Transit chassis remotely using FordPass™ with Wi-Fi Hotspot.

- Lock and unlock your vehicle
- Locate your parked vehicle
- Check oil life, fuel level, mileage and maintenance intervals



### PLEASE NOTE

Some Ford features listed may not be available on all chassis. Please see your Pleasure-Way dealer for complete details.





Sherry Shaeffer | Mission Canyon, Montana



Luanne & David Porper (Delta the Yorkie)



Shawnda & Mark Servello | Beach in Washington State

## THE PLEASURE-WAY LIFE

Traveling in a Pleasure-Way motorhome affords some unique advantages over traditional RVing in a larger Class A, Class C or pull-type trailer. There are the more obvious advantages of stress-free driving, easy and accessible parking, and the ability to explore 'off the beaten track' locations.

You'll have the ability to visit friends and relatives for family functions, reunions, graduations, and weddings. No more hotel reservations or inconveniencing your host. The strategic design of our motorhomes ensure a quick and easy set up once you arrive at your destination. Since all your amenities are covered, you are free to be spontaneous with your adventures without compromise.

Whether you are a seasoned full-timer or an RV newbie, something has drawn you into the Pleasure-Way lifestyle. Memories will be created, friends will be made, and stories will be shared!

### PLEASURE-WAY AMBASSADOR CREW

We believe our best salespeople are happy owners, and the PAC program offers the opportunity to reward members for their efforts to promote our motorhomes.

We provide our members with personalized PAC cards to hand out to potential clients or interested parties. These cards are used to gain loyalty rewards for both parties upon purchase of a new Pleasure-Way motorhome.

Visit [pleasureway.com/pac](http://pleasureway.com/pac) to sign up and learn more.

### PLEASURE-WAY OWNERS' CLUBS

We believe that meeting new friends and sharing adventures is an important part of the Pleasure-Way experience. A wonderful group of people have formed our Pleasure-Way owners' clubs and are based on the East and West Coasts of the United States and Western Canada. Owners have fallen in love with the Pleasure-Way lifestyle and actively participate in our club rallies. Pleasure-Way owners' clubs are operated and run by owners who enjoy the RV lifestyle and share the same passion for Pleasure-Way.



Visit us at [pleasureway.com](http://pleasureway.com) for more information on how to join and participate in Pleasure-Way owners' clubs, events, and rallies.



## COACH SPECIFICATIONS

	2.0	2.2
<b>ENTERTAINMENT</b>		
24" Smart LED TV	•	•
Bose® soundbar w/ Bluetooth®	•	•
Winegard® Rayzar® Automatic HDTV antenna	•	•
Cable TV hook up	•	•
USB charging ports	•	•
<b>INTERIOR</b>		
Side and rear door roll-up screens	•	•
MCD blackout roller shades w/ magnetic catch	•	•
Privacy/sun shades for windshield & cab doors	•	•
Laminate radius cabinet doors	•	•
Blum® cabinet hinges and door stays	•	•
Laminate-wrapped kitchen, wall partitions & cabinets	•	•
Soft touch vinyl headliner	•	•
Premium vinyl flooring	•	•
<b>GALLEY</b>		
12V 3.2 cu. ft. refrigerator/freezer	•	
12V 5.5 cu. ft. refrigerator/freezer		•
Corian® solid surface countertop	•	•
1-burner induction stove	•	•
Microwave	•	•
13"x17" stainless steel sink w/ faucet & pull-out sprayer	•	•
<b>BATHROOM</b>		
Private wet bathroom w/ shower	•	•
Vanity w/ storage, stainless sink & Corian® countertop		•
<b>SEATING AREA</b>		
Lagun table mount system w/ 360° swivel tabletop	•	•
Power sofa w/ two three-point seat belts	•	•
Memory foam sofa cushions	•	•
Ultraleather® fabric	•	•
<b>HEATING, VENTILATION &amp; COOLING</b>		
Truma VarioHeat 11,500 BTU furnace	•	•
Power lift Fan-Tastic Vent fan w/ rain sensor	•	•
Low profile 11,000 BTU roof mount air conditioner	•	•
3M™ Thinsulate™ insulation	•	•

	2.0	2.2
<b>ELECTRICAL</b>		
Multiplex wiring w/ dimmable LED lighting	•	•
Dual 10-inch touchscreen control panels	•	•
Dual 100Ah Eco-Ion lithium (LiFePO4) coach batteries	•	•
Internal/automatic coach battery heating system	•	•
Xantrex™ 2000-Watt Pure-sine wave inverter	•	•
80-amp lithium charger	•	•
2.8 KW Onan® QG 2800i gas generator	•	•
Automatic generator start (AGS)	•	•
30-amp power cord	•	•
<b>PLUMBING &amp; LIQUID PROPANE SYSTEMS</b>		
Truma AquaGo® comfort plus instant water heater	•	•
Shurflo® automatic demand water system	•	•
LP BBQ quick connect	•	•
Tank level monitoring – LP, fresh, grey and black	•	•
<b>EXTERIOR</b>		
200-Watt solar panel package w/ MPPT charger	•	
300-Watt solar panel package w/ MPPT charger		•
Power awning w/ LED lights	•	•
Exterior shower w/ handheld wand	•	•
Hitch and wiring	•	•

## WEIGHTS & MEASUREMENTS

	ONTOUR 2.0	ONTOUR 2.2
Length (bumper to bumper)	19' 8" / 598 cm	21' 10" / 670 cm
Width (side mirrors ext.)	8' 1.5" / 248 cm	8' 1.5" / 248 cm
Width (side mirrors retr.)	7' 0.5" / 215 cm	7' 0.5" / 215 cm
Overall height	10' / 305 cm	10' / 305 cm
Interior standing height	6' 6" / 198 cm	6' 6" / 198 cm
Fresh water tank capacity	25 US gal / 95L	28 US gal / 107 L
Grey water tank capacity	15 US gal / 57 L	15 US gal / 57 L

## CHASSIS SPECIFICATIONS

	ONTOUR 2.0	ONTOUR 2.2
Chassis	Ford Transit 250	Ford Transit 350
GVWR	9,070 lbs / 4,114 kg	11,000 / 4,990 kg with Dual Rear Wheel
GCWR	11,200 lbs / 5,080 kg	12,600 lbs / 5,715 kg
Standard engine	3.5L EcoBoost® V6	3.5L EcoBoost® V6
Fuel type/tank capacity	Gas/25 US gal/95 L	Gas/25 US gal/95 L
HP rating	310 HP	310 HP
Torque rating	400 ft-lbs	400 ft-lbs
Wheelbase	148 inches	148 inches
Transmission (auto)	10-speed SelectShift®	10-speed SelectShift®
Locking fuel fill	Yes	Yes
Chassis air conditioning	Yes	Yes
Power windows, locks, mirrors	Yes	Yes
Remote keyless entry	Yes	Yes
Steering wheel positioning	Tilt and Telescopic	Tilt and Telescopic
Breaking system	Disc Brakes w/ABS	Disc Brakes w/ABS
Stability and traction control	AdvanceTrac® w/(RSC)	AdvanceTrac® w/(RSC)
Tire pressure monitoring	Yes	Yes
Tires (all season)	235 / 65R / 16C	195 / 75R / 16C
Alternator/chassis battery	250 amp / 12v 70Ah	250 amp / 12v 70Ah
Air bags (driver & pass.)	Yes	Yes
Nav/Bluetooth®/SiriusXM®	Yes	Yes
Rear view camera system	Yes	Yes
Swivel seating (driver & pass.)	Yes	Yes
Smart wheel functions	Yes	Yes

	ONTOUR 2.0	ONTOUR 2.2
Black water tank capacity	11 US gal / 41 L	11 US gal / 41 L
LP gas tank capacity	12 US gal / 45 L	12 US gal / 45 L
Towing capacity	2,130 lbs / 966 kg	1,600 lbs / 725 kg
Queen bed size	68" W X 77" L	68" W X 79" L
Driver side rear single bed	24" W X 77" L	24" W X 79" L
Pass. side rear single bed	24" W X 77" L	24" W X 79" L



**ONTOUR 2.0**



**ONTOUR 2.2**



**WARRANTY**

**PLEASURE-WAY WARRANTY**

All Pleasure-Way motorhomes are backed by our Five Year Freedom Warranty. Pleasure-Way Industries Ltd. warrants the specified new Pleasure-Way Motorhome free from defects in material and craftsmanship, on portions manufactured by Pleasure-Way Industries Ltd. under normal use and service.

Coverage - 5 years or 60,000 miles / 100,000 kms  
Limited Warranty

**FORD WARRANTY**

Basic Limited Warranty

- Coverage - 3 years or
- 36,000 miles / 60,000 kms

Powertrain Limited Warranty

- Coverage - 5 years or
- 60,000 miles / 100,000 km

Roadside Assistance

- 5 years or 60,000 miles / 100,000 kms



**PLEASURE-WAY PERSONAL ASSISTANT**

We understand that it takes time to get completely familiarized with your new motorhome and all of its features. For this reason, you will be designated your very own Pleasure-Way Personal Assistant for the first 90 days of ownership!

Your P.A. is a specialized and knowledgeable member of the Pleasure-Way team who works right here in our manufacturing facility. Upon receiving the warranty registration of your new motorhome, your P.A. will provide you with their contact information. You will now have access to your Pleasure-Way P.A. six days a week, via a dedicated, toll-free phone number or email.

Your Pleasure-Way P.A. will be there to assist you in all matters pertaining to the operation of your Pleasure-Way motorhome. After your 90 day period expires, you will have all the confidence and knowledge to enjoy your new Pleasure-Way for years to come!



**PLEASURE-WAY GOLIVE**

You can now explore any current Pleasure-Way model from the comfort of your own home! This unique experience allows you to take a one-on-one personalized video tour with one of our friendly Pleasure-Way GoLive Agents. You will have full access to view any feature or component of our motorhomes via a one-way video call. Get expert advice and real time answers to all your questions with Pleasure-Way GoLive. Try it today! [pleasureway.com/golive](http://pleasureway.com/golive)



302 Portage Avenue  
Saskatoon, SK,  
Canada S7J 4C6

Tel: 800.364.0189  
[www.pleasureway.com](http://www.pleasureway.com)

[facebook.com/PWindustries](https://facebook.com/PWindustries)

[youtube.com/user/pleasureway](https://youtube.com/user/pleasureway)

[@pleasurewayrv](https://instagram.com/pleasurewayrv)

Due to our policy of continuous improvements, Pleasure-Way Industries Ltd. reserves the right to make product changes at any time without notice and without incurring obligations whatsoever, including but not limited to: prices, styling, design, colors, construction, equipment, materials, and specifications. Some motorhomes depicted in the brochure may be shown with optional equipment. Please see your dealer for additional information or contact Pleasure-Way Industries Ltd. Estimated fuel consumption may vary depending on conditions and driving habits. Estimates are based on consumer feedback.